



**Size:** UK 10/12-12/14 - US 6/8-8/10 - EU 36/40-38/40

**Note:** for each size larger or smaller, calculate approx 2cm more or less in width and height. The stitches added or decreased must be distributed or eliminated in the parts worked in moss stitch. Buy 50g more or less of yarn for each size.

**Skill Level:** intermediate

**How much yarn:** 3 balls (each ball 50g and 125m) of Catena Soft yarn (40% Cotton, 37% Extrafine Merino Wool, 23% Baby Alpaca) n. 30534

**Needles:** A pair of 6.50mm needles

A cable needle

**Sewing needle:** Yarn needle with rounded point

## STITCHES

**Using needles:** moss stitch (moss st)

Stocking stitch (st st) - K2, P2rib

RIGHT CABLE: (work on 10 sts)

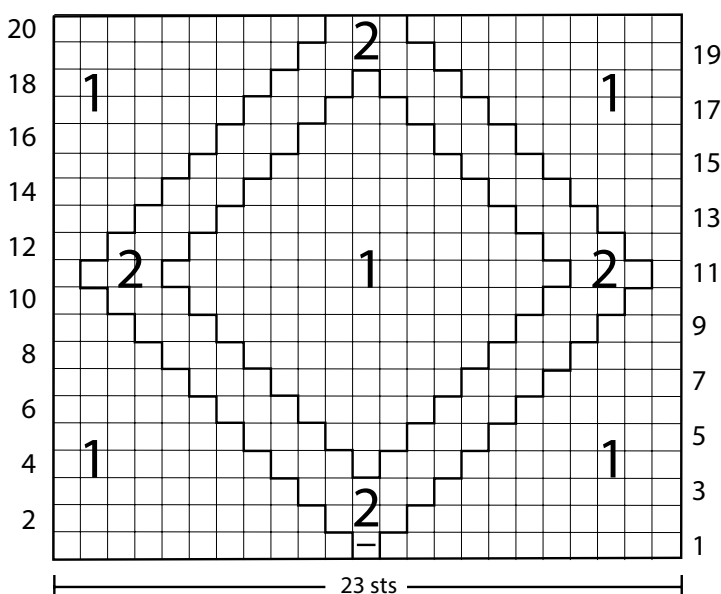
**1st and 3rd rows:** P2, K6, P2. **2nd and even rows:** K2, P6, K2. **5th row:** P2, C6B (= slip 3 sts onto cable needle, hold to the back, K3 sts, K3 sts from cable needle), P2. **7th and 9th rows:** P2, K6, P2. **10th row:** K2, P6, K2. Rep these 10 rows throughout.

LEFT CABLE: (work on 10 sts)

**1st and 3rd rows:** P2, K6, P2. **2nd and even rows:** K2, P6, K2. **5th row:** P2, C6B (= slip 3 sts onto cable needle, hold to the front, K3 sts, K3 sts from cable needle), P2. **7th and 9th rows:** P2, K6, P2. **10th row:** K2, P6, K2. Rep these 10 rows throughout.

DIAMOND: work over 23 sts, following diagram and key.

DIAMOND



## TENSIONS

13 sts and 20 rows measure 10cm square over moss stitch with 6.50 mm knitting needles and 2 strands of yarn held together. The 10 sts of each Cable measure 5cm. Take time to check each tensions before starting work: it is essential to work to the stated tension to achieve success.

## INSTRUCTIONS

**Note:** work using 2 strands of yarn held together. Cast on 73 sts, work 4 rows in moss st for beginning border (= 2cm), then continue as follows: 10 sts in moss st, 10 sts Right Cable, 5 sts in moss st, 23 sts with Diamond Motif (starting with P1 as shown in diagram), 5 sts in moss st, 10 sts Left Cable, 10 sts in moss st. When poncho measures 55cm from beg, shape Front neck by casting off on left side 2 sts on next and every following 4th row 4 times. Then work 8cm straight and complete neck shaping, always on left side, casting on 2 new sts on next and every following 4th row 4 times (neck shaping measures 20cm from beg). When poncho measures 148cm from beg, work 4 rows in moss st for ending border(=2cm), then cast off. For **Collar**, with RS facing, pick up and K 78 along neckline and work 8cm in K2, P2, then cast off. Sew collar and right side seam, with poncho worn.

**Note:** wash garment carefully at low temperatures, with a very little fabric softener. Lay the garment to dry on a flat surface, without ever hanging it.

### KEY

1 = stocking stitch

2 = moss stitch

☐ = P1

Each square corresponds to 1 st and 1 row. Rep rows 1-20 throughout.